



# — BEDFORD ROAD —

## ATRIUM SUITE

Yorkville - Spectacular 2-bedroom Loft-Style, 3-Level, 2,000 sq. ft. Designer Condo. Walk to famed Sotto Sotto, Whole Foods, designer boutiques and Bloor-Yorkville's galleries and museums. Built in a majestic mansion flooded with natural light. 25 ft. high Atrium with 10 Skylights, Sky Patio, 2 Balconies, Chef's Kit. Fully soundproofed overlooking lush gardens, combining the character and elegance of a Victorian exterior, with a contemporary open concept interior.

### UNIQUE FEATURES

- Split 3-level unit
- Cathedral ceiling
- Radiant heated floors
- Central air conditioning
- Hardwood flooring
- Stainless steel appliances
- DSL-Cable
- Landscaped terrace
- Balconies
- Garden views
- Grand spa bathroom







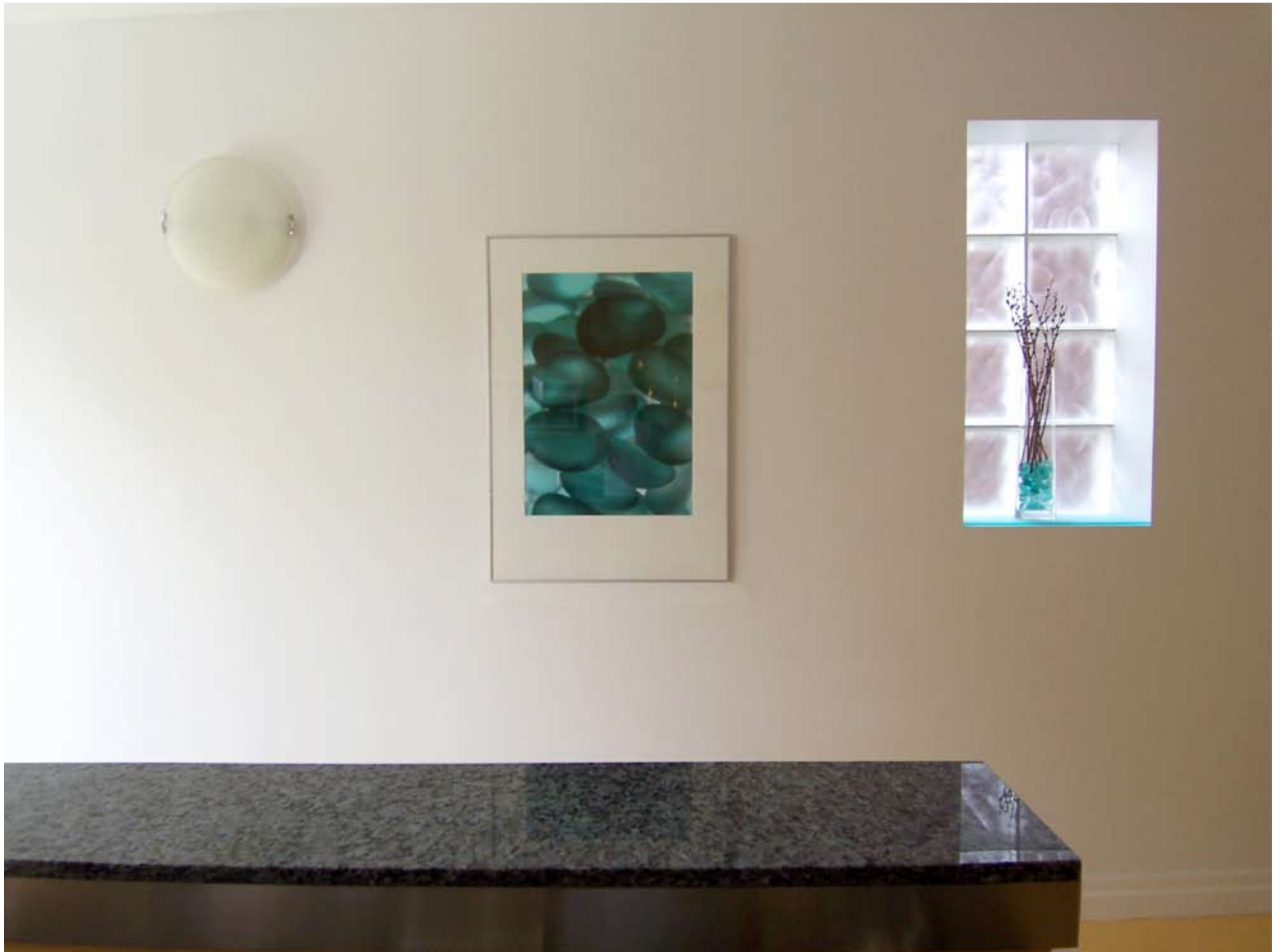












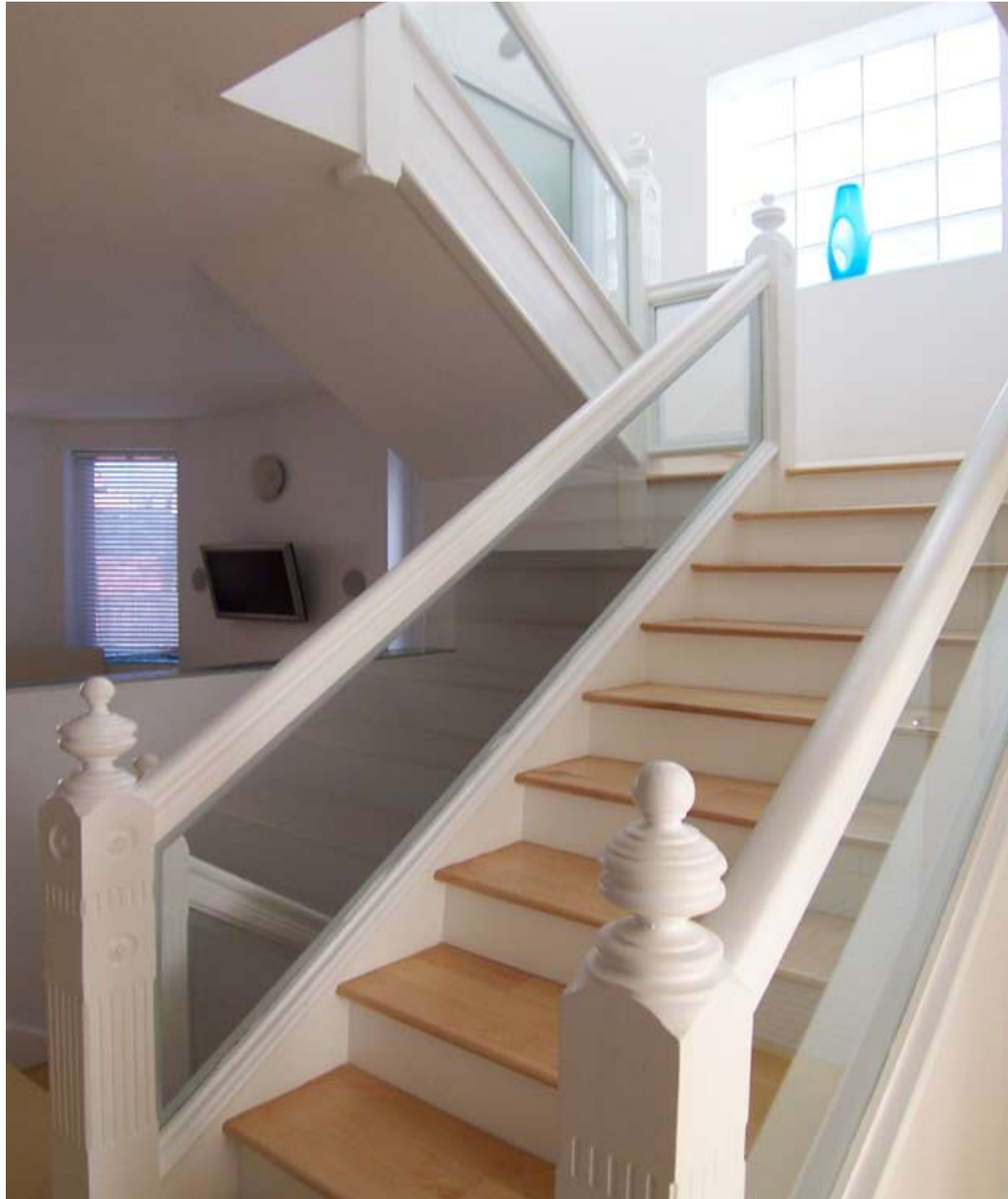


















At a touch of a button, reveal the morning sky through the 6 skylights in the 20ft cathedral ceiling. Greet the sunlight from your private patio.

Feel the warmth of the radiant floors in the light infused spa en-suite bathroom. Take a shower in the haze of morning light.

Relax in the whirlpool of the master spa bathroom as you gaze at the stars and the moon through one of 3 skylights.











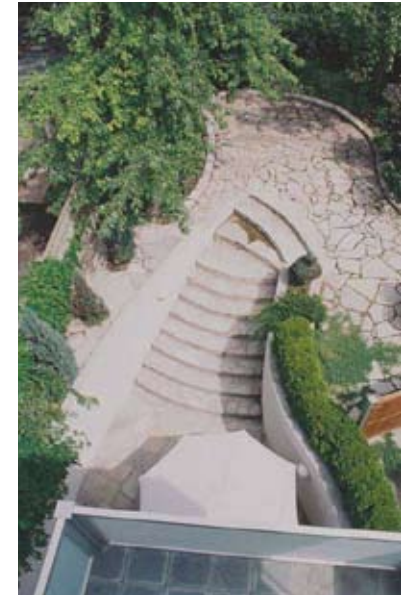




# — BEDFORD ROAD —

## ATRIUM SUITE

The unit features 2 balconies and a spacious private upper-deck with gorgeous east facing views, overlooking the greenery of Yorkville.



# AROUND THE CORNER



## SOTTO SOTTO

One of Toronto's finest restaurants. Italian Menu.



## FLOWER SHOPS

Treat yourself to spring even in the winter with flowers.



## BRUNCHES

Great for weekend brunches/ lunches.



## WHOLE FOODS

Leave the house, turn left on the first street and walk for four minutes to the Yorkville shopping.



## GYM

The Yorkville Club is located opposite Whole Foods.







— BEDFORD ROAD —  
ATRIUM SUITE